

**Combiantenna with 4x4 MIMO 4G/5G, 2x2 MIMO WLAN, GPS in Shark design**



The Double Shark is an advanced 4G/5G, GPS/GNSS and WiFi antenna with a dual sharkfin style housing. The housing contains a 4x4 MIMO antenna function for 4G/5G (617-960/1427-6000MHz), 2x2 MIMO dual-band WiFi and one active GPS/GNSS antenna with a 26dB gain LNA and advanced filtering for LTE Band 13/14 operation.

For any further informations like Pattern data and other diagrams feel free to contact us.

**Cabtronix AG**  
Electronic Solutions  
Hohstrass 1  
8302 Kloten  
+41 44 804 74 74  
info@cabtronix.ch

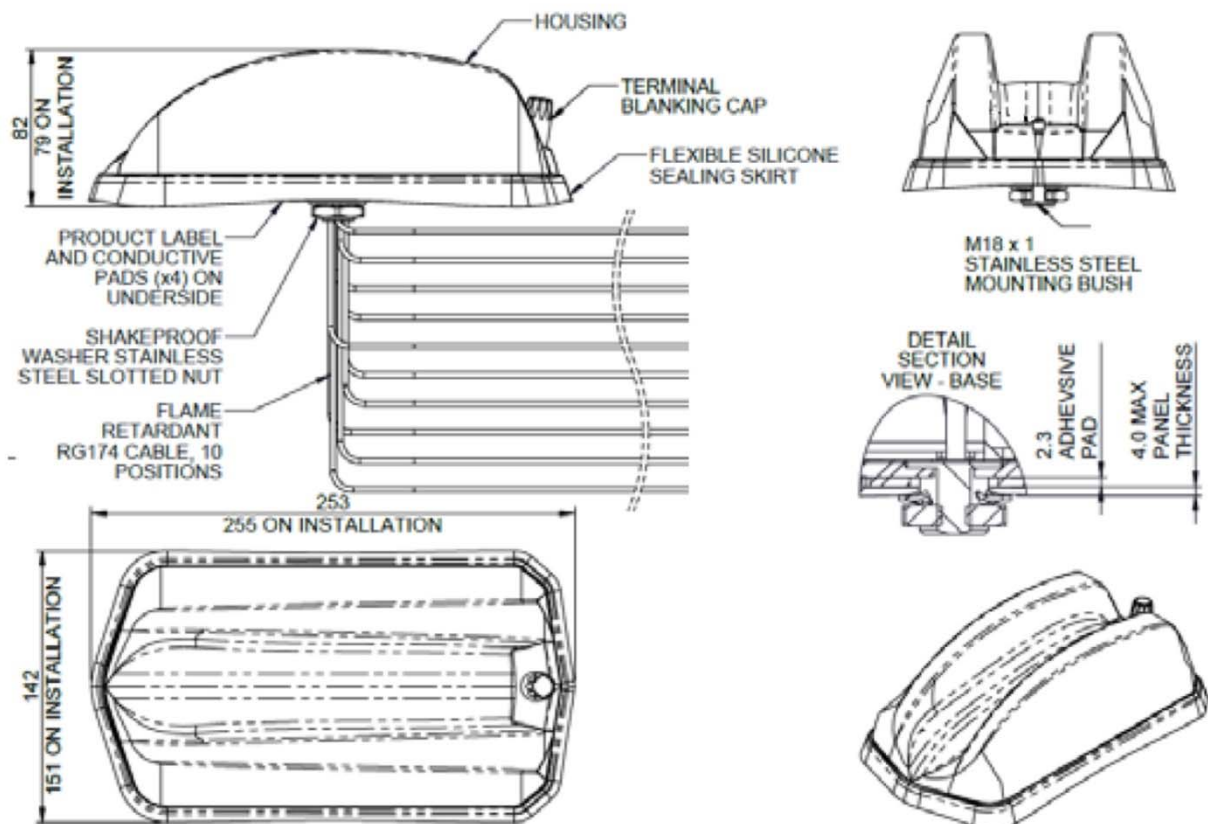
**Technical Data :**

4x4 MIMO 4G/5G (4 Connections)	
Frequency Range	617 – 960 MHz 1427 – 6000 MHz
Peak Gain	617 – 960 MHz +5 dBi 1427 – 4200 MHz +8 dBi 4900 – 6000 MHz +9 dBi
Correlation Co-efficient	< 0.25
Efficiency	617 – 698 MHz > 40% 698 – 960 MHz > 70% 1710 - 6000 MHz > 70%
Isolation	617 – 960 MHz > 8dB 1427 – 6000 MHz > 15dB
Polarisation	Vertical
Max. Power input	Internal elements 5W
Impedance	50 Ω
Connectors	Fakra male (violet)

2x2 MIMO WiFi (2 Connections)	
Frequency Range	2.4 GHz 4.9 – 7.1 GHz
Peak Gain	2396 – 2485 MHz +7 dBi 4900 – 7100 MHz +11 dBi
Isolation	> 15dB
Impedance	50 Ω
Connectors	Fakra male (green)

GPS (1 Connections)	
Frequency Range	1562 – 1612 MHz
Polarisation	Right Hand Circular
LNA Gain	26dB
Operating Voltage	3 – 5 VDC
Current	< 20mA
Connectors	Fakra male (blue)

Basic Informations	
Size	L=253mm x W=142mm x H=82mm
Temperature	-40 to 80 °C
Cable typ	Low Loss RG174
Cable length	0.3 m (Standard)
Protection	IP69K
Color	Black



### Ordering Information :

#### Ordering Informations

CTX3658A-0030

Kombi-Antenne "Double Shark" 4x4 MIMO 4G/5G, 2x2 MIMO WLAN, GPS, schwarz, Fakra male